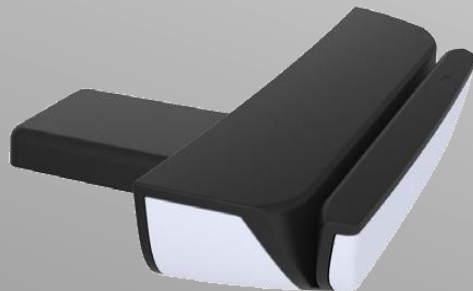


**GCD-130 PT**  
MULTI APPLICATION POS TERMINAL

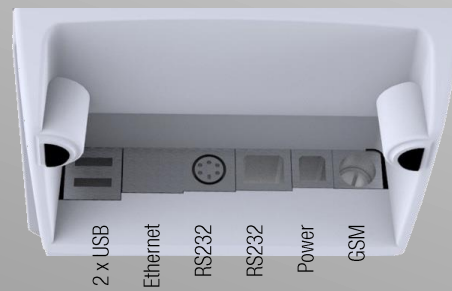




# FEATURES



Hybrid Reader OCR & Magnetic Card



| ALERTS                       | PERFORMED           |
|------------------------------|---------------------|
| Device temperature           | When exceeding 60°C |
| Hardware malfunction         | With occurrence     |
| SIM status/removal           | With occurrence     |
| Location - BTS Cell ID / GPS | Continuous/optional |



## SPECIFICATIONS

### Processor & Memory

- ARM8 Cortex CPU 1.2 Ghz
- 512MB RAM
- 4GB Flash Memory

### Modem, RFID, Card Reader

- Modem GSM/GPRS or 3G quad band
- Dual SIM holder
- Dual antenna (built-in & external)
- Internal GSM reception and battery management
- RF-ID reader ISO 14443 A/B Mifare 13.56 Mhz
- Magnetic Card Reader (optional)

### Display

- 4.3" TFT Color Touch (capacitive) – 480 x 272 dots

### Printer, Battery, Keypad

- Alphanumeric keypad, function keys
- Thermal printer 12 lines/sec, 24 letters/line 384 dots
- Long duration battery pack 7.4V 4400 mAh

### Size & Weight

- Weight: 415 g (incl. battery)
- Size: 242 x 122 x 80 mm

### Certifications / Standards

- CE, EN 301 908-1, EN 301 908-2, EN 301 511 V9.0.2
- EN301 489-1, EN 60 950-1, RoHS

### Connectors

- 2 x Serial RS232
- 1 x External antenna GSM FME
- 1 x Power connector
- 2 x USB (host or slave)
- 1 x Ethernet 10/100 Mbit
- SD-Card 32GB
- WiFi module (optional)
- Bluetooth module (optional)
- External pin pad / credit card reader (optional)
- External touch pad 7" (optional)
- External barcode scanner (optional)
- External fingerprint reader (optional)

### Temperature Conditions

- Operating temperature range: -10°C to +60°C.
- Storage temperature range: -10°C to +75°C.
- Operating humidity range: +10°C to +85°C.

### Package & Documentation

- Aya GCD-130 touch terminal
- External remote antenna (3m)
- AC/DC charger
- Installation guide / user manual